

**Certified**  
Realty, Inc.

2101 CORONA RD SUITE 102  
Columbia, Missouri



AVAILABLE COMMERCIAL SPACE

Office/Retail space located in Southwest Columbia, MO

SIZE: 3360 SQ. FT.

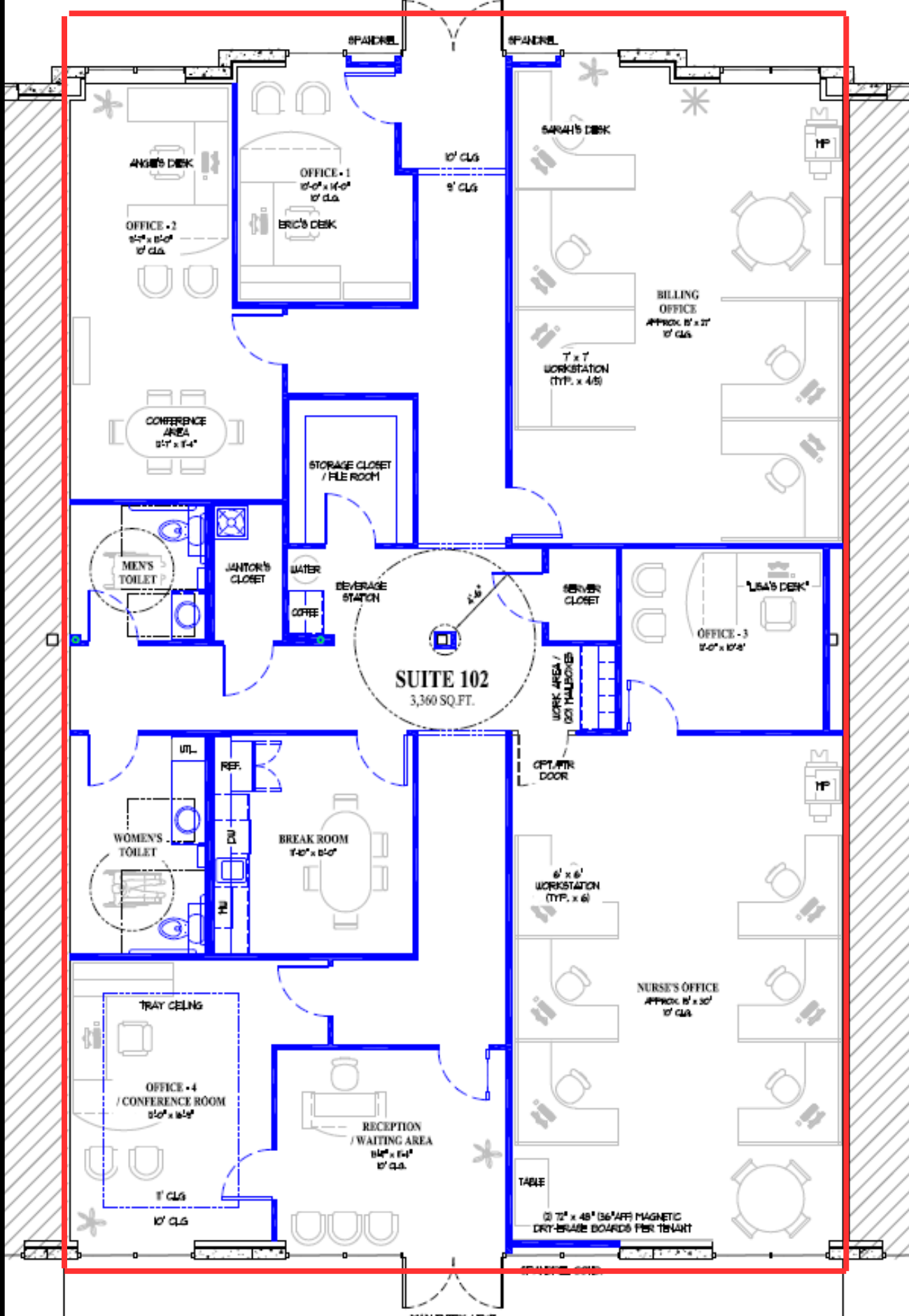
\$16 PER SQ. FT. + NNN

TRAVIS H. MCGEE:

Office: 573-443-4521 Cell: 573-489-3311

Email: [travis@THMinvestmentsLLC.com](mailto:travis@THMinvestmentsLLC.com)

ENTRY / EXIT  
(KEYED LOCKSET)



SUITE 102  
3,360 SQ. FT.

ANDY'S DESK

OFFICE - 1  
12'-0" x 14'-0"  
w/ c.l.s.

ERIC'S DESK

OFFICE - 2  
12'-0" x 12'-0"  
w/ c.l.s.

SARAH'S DESK

BILLING  
OFFICE  
APPROX. 12' x 27'  
w/ c.l.s.

7' x 7'  
WORKSTATION  
(TYP. x 4/5)

CONFERENCE  
AREA  
12'-7" x 11'-4"

STORAGE CLOSET  
/ FILE ROOM

MEN'S  
TOILET

JANITOR'S  
CLOSET

WATER

COFFEE

BEVERAGE  
STATION

SERVER  
CLOSET

LISA'S DESK

OFFICE - 3  
12'-0" x 12'-0"

SUITE 102  
3,360 SQ. FT.

OPT. AIR  
DOOR

UTL.

REF.

WOMEN'S  
TOILET

BREAK ROOM  
11'-0" x 12'-0"

6' x 6'  
WORKSTATION  
(TYP. x 6)

TRAY CEILING

OFFICE - 4  
/ CONFERENCE ROOM  
12'-0" x 12'-0"

RECEPTION  
/ WAITING AREA  
14'-0" x 14'-0"  
w/ c.l.s.

NURSE'S OFFICE  
APPROX. 12' x 20'  
w/ c.l.s.

TABLE

(2) 12' x 48' (36'AFF) MAGNETIC  
DRY-ERASE BOARDS PER TENANT